

2016年6月4日JG62 建中同學會

Alaska Cruise Reunion Summary

建中1962 (JG62) 2016 Reunion at Alaska Cruise and Land Tour

Date: 6/4/2016 (Saturday) on board at Vancouver

Choice 1: 8 days Alaska Cruise, Princess, 6/4/16 to 6/11/16 (I-\$1024; O-\$1744; B-\$1934) (note 1)

Choice 2: 8 days Alaska Cruise + 3 days Land Tour, on your own w/o meal (I-\$1520; O-\$2210; B-\$2440), (note1, 5)

Choice 3: 8 days Alaska Cruise+ 6 days Escorted Land Tour with most meals (I-\$2871.O-\$3561;B-\$3751), (note1, 5)

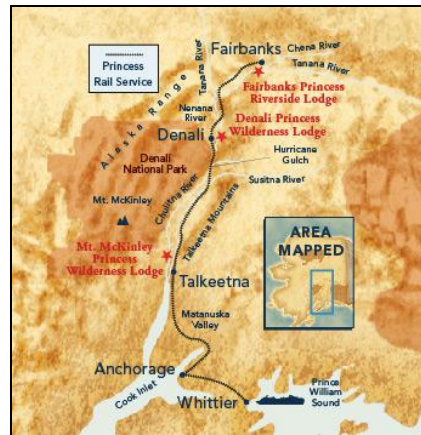
Choice 4: 8 days Alaska Cruise+ 6 days Land Tour, on your own w/o meals (I-\$2091.O-\$2362;B-\$3001), (note1, 5)

Notes:

1. Airfare, tips and shore excursions are not included . (Tax & port expense are included, all costs are estimate)
2. All fee and booking will be handled by Travel Design USA Inc. directly
3. Choice 1 (8 days) and Choice 4 (14 days) end at Anchorage.
4. Choice 2 (11 days) and Choice 3 (14 days) end at Fairbanks. There is no international flight at Fairbanks airport.
For Taiwan classmates, book Fairbanks to Seattle is cheaper than Fairbanks to Vancouver.
5. Choice 2 and Choice 4 (no guide, no meal), Choice 3 (with guide and most meal)
6. I-inside cabin; O-ocean view cabin; B-balcony cabin (Prices are varied within each I, O, B cabin)



Choice 1



Choice 2 & 3



Choice 4

建中1962 (JG62) 2016 Reunion at Alaska Cruise and Land Tour

Choice 1 (8 days)
= Cruise only
End at Anchorage

I - inside cabin,
(\$779 to \$929)+tax
Travel Agency (TA) holds
16- \$809 inside cabin,
Deck 5, 8, and 12

O – ocean view cabin
(\$979 to \$1589)+tax
TA holds 8-deck 8-\$979
8-deck 5 - \$1529 cabin

B – balcony cabin
(\$1699 to \$1839)+tax
TA holds 16-\$1719 cabin
Deck 5, 8, and 12

Tax = \$215

Choice 2 (11 days)
= Cruise + Land A
End at Fairbanks

I - inside cabin,
(\$1178 to \$1328) + tax +
Land Tour Transfer Fee
(LT)

O – ocean view cabin
(\$1378 to \$1988)+tax+LT

B – balcony cabin
(\$2098 to \$2558)+tax+LT

Tax = \$243.56 (estimate)
Land transfer fee = \$38

Choice 3 (14 days)
= Cruise + Land B
End at Fairbanks

I - inside cabin,
(\$2529 to \$2679)+tax+LT

O – ocean view cabin
(\$2769 to \$3339)+tax+LT

B – balcony cabin
(\$3449 to \$3589)+tax+LT

Tax = \$243.56
Land Tour Transfer Fee
(LT) = \$38

Choice 4 (14 days)
= Cruise + Land C
End at Anchorage

I - inside cabin,
(\$1779 to \$1929)+tax+LT
Travel agency holds 2-
\$1809 inside cabin

O – ocean view cabin
(\$1979 to \$2589)+tax+LT
TA holds 3- \$1979 cabin

B – balcony cabin
(\$2699 to \$2839)+tax+LT
TA holds 3- \$2719 cabin

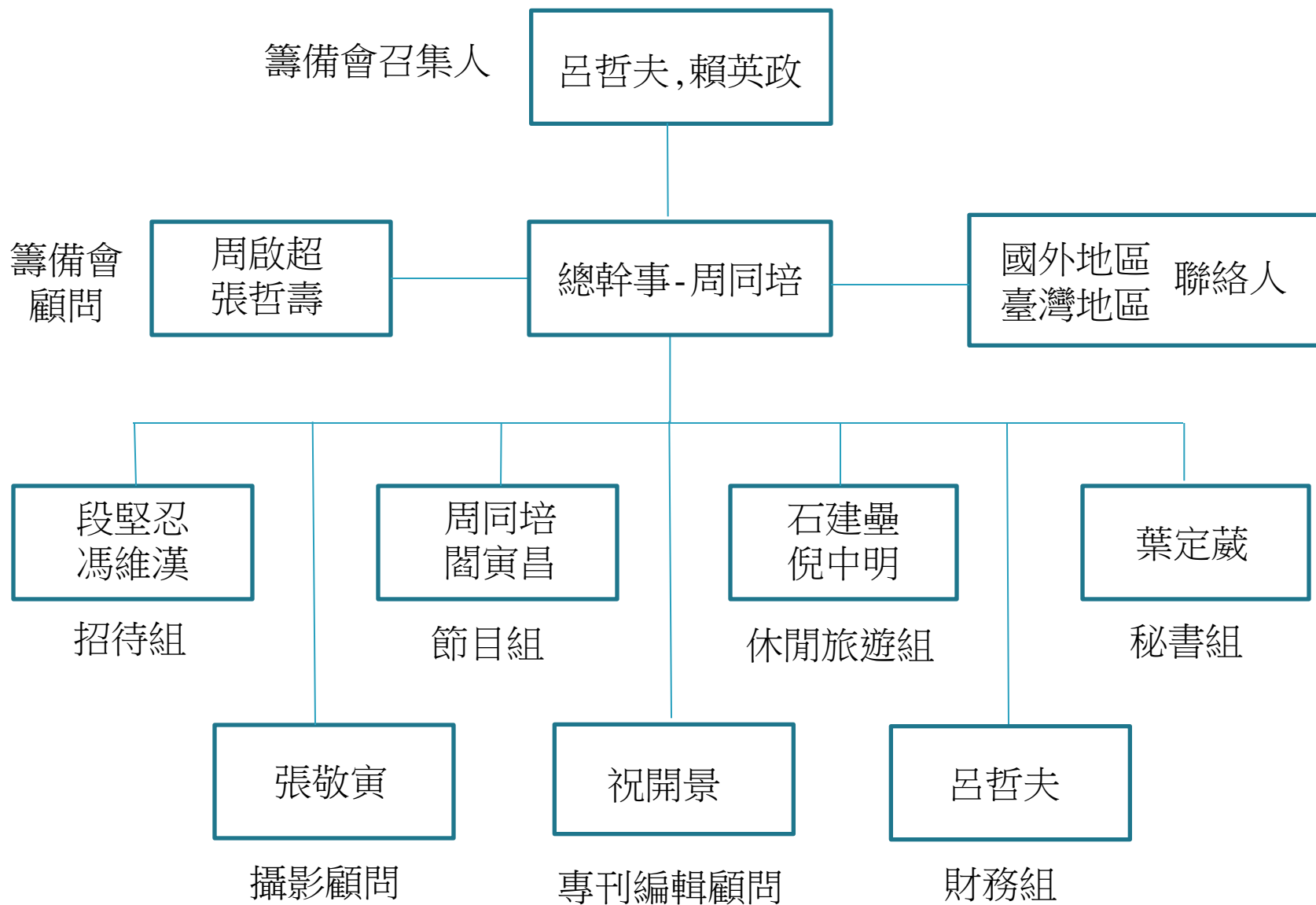
Tax = \$243.56
Land Tour Transfer Fee
(LT) = \$38

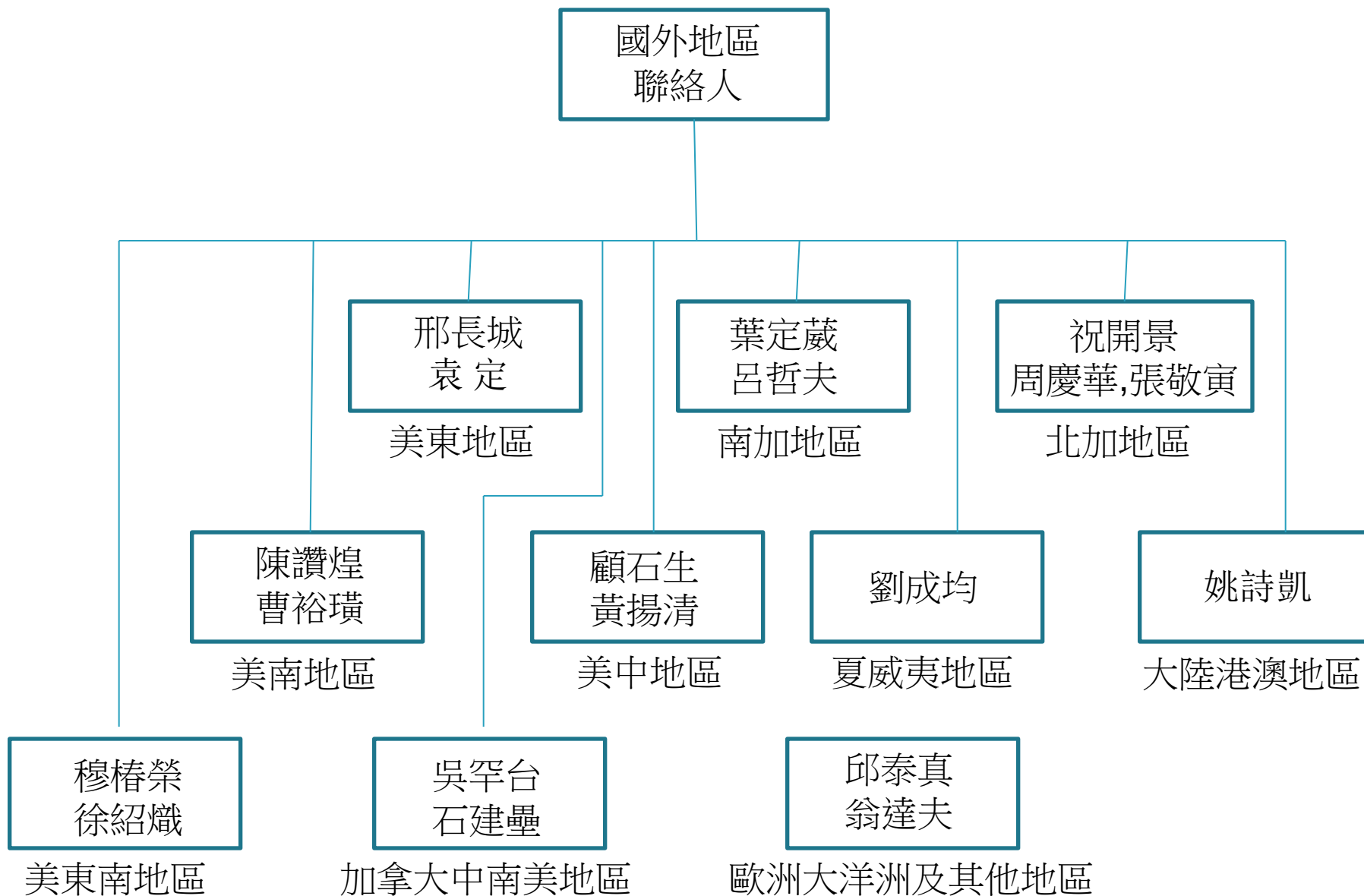
Choice 1: Vancouver – Ketchikan – Juneau – Skagway – Glacier Bay Park – College Fjord – Anchorage

Choice 2: Choice 1 + Land A = Choice 1 + (Anchorage - Whittier/Denali – Denali/Fairbanks – Fairbanks (without guide & meal))

Choice 3: Choice 1 + Land B = Choice 1 + (Anchorage - Whittier/Mt McKinley – Mt McKinley/Denali – Fairbanks (with guide & most meals))

Choice 4: Choice 1 + Land C = Choice 1 + (Anchorage – Whittier/Valdez/Copper River – Copper River/Denali – McKinley – Anchorage (without guide & meal))





臺灣地區
聯絡人

陳哲夫
一班

李彩添
二班

路重威
三班

林榮典
四班

陳鐘杉
五班

陳進旺
六班

王惠中
七班

方平輝
陳永宗
老一班

林金填
八班

吳俊智
九班

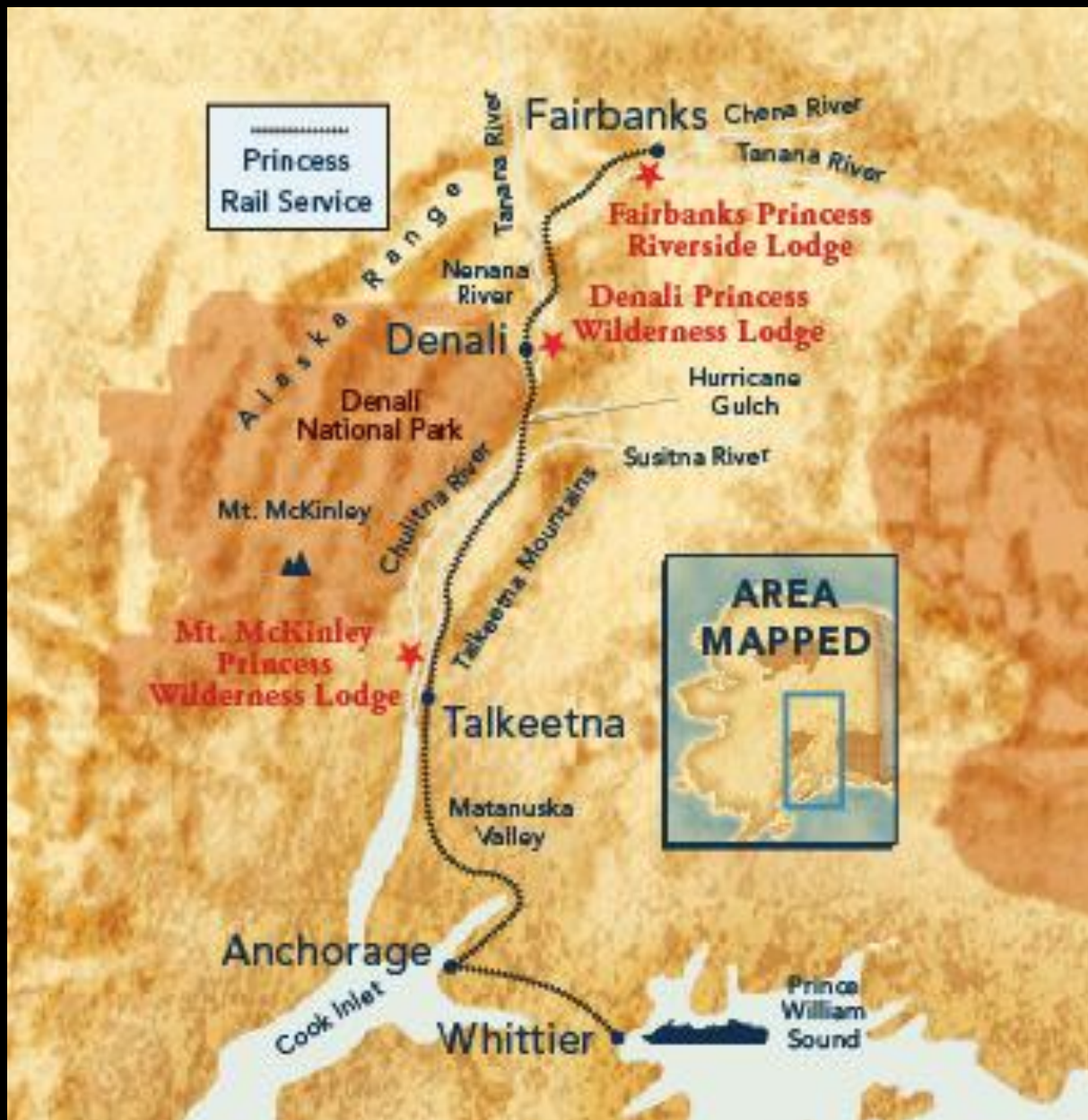
江宏
十班

陳鐘杉
老五班





Choice 1



Choice 2 & 3



Land Tour Points of Interest: - Anchorage (Whittier), Alaska

1. Prince William Sound
2. Portage Glacier
3. Turnagain Arm
4. Mt. Alyeska Tram
5. Seward Highway
6. Alaska Wildlife Conservation Center
7. Outdoor Adventures
8. Anchorage

Land Tour Point of Interest: Mt. McKinley Princess Wilderness Lodge (Talkeetna)

1. Mt. McKinley
2. Talkeetna
3. Denali State Park
4. Rivers - Talkeetna, Susitna & Chulitna
5. Glaciers
6. Sled Dog Experience
7. Alaska Homesteading
8. Gold Panning

Land Tour Points of Interest: Fairbanks

1. Arctic Circle
2. Riverboat Discovery
3. Trans-Alaska Pipeline
4. Gold Dredge # 8
5. Fountainhead Antique Auto Museum
6. Chena Hot Springs & Ice Museum
7. Pioneer Park
8. Native Cultures

Points of Interest: - Anchorage (Whittier), Alaska

1. Prince William Sound

Boasting more tidewater glaciers than anywhere else in North America, this gorgeous deepwater sound is home to a host of rich marine life.

2. Portage Glacier

This giant wall of ice is one of Alaska's most popular and exciting attractions. It's your chance to witness glacier calving and hear the thunderous roar when a huge block of ice crashes into the sea.

3. Turnagain Arm

The journey along the Turnagain Arm of Cook Inlet is one of the world's great drives, boasting breathtaking views of mountain scenery and the inlet and the chance to see wildlife.

4. Mt. Alyeska Tram

Climb 2,300 feet above sea level to a viewing deck with panoramic vistas of hanging glaciers towering mountains, expanses of evergreen and glistening streams. Telescopes on deck intensify the view.

5. Seward Highway

The Seward Highway linking Anchorage and Seward is a National Scenic Byway and one of 15 routes designated as an "All-American Road" in the United States. Dramatic views of wild Alaska abound.

6. Alaska Wildlife Conservation Center

Dedicated to preserving Alaska's wildlife through public education, this refuge for injured and orphaned animals includes moose, elk, caribou, bears, musk oxen, bison, deer, lynx and eagles.

7. Outdoor Adventures

Enjoy what is truly an outdoorsman's paradise, with activities you won't find anywhere else.

8. Anchorage

A modern city surrounded by spectacular wilderness and the state's largest community. Enjoy world-class attractions, Native Alaskan culture, shopping and dining in this four-time All American City.

Point of Interest: Mt. McKinley Princess Wilderness Lodge (Talkeetna)

1. Mt. McKinley

The highest mountain in North America, McKinley is also perhaps the coldest mountain in the world outside of Antarctica, a challenge for even the most experienced climbers.

2. Talkeetna

Talkeetna was originally the site of a Tanaina Indian village, and was settled as a mining town in 1896. Today, this small distinctive community is probably the best location to view Mt. McKinley.

3. Denali State Park

Denali State Park covers 325,240 acres north of Anchorage and south of Denali National Park. It boasts a landscape that varies from meandering lowland streams to alpine tundra.

4. Rivers - Talkeetna, Susitna & Chulitna

The Talkeetna and Chulitna Rivers join the Susitna River at Talkeetna, an Indian (Tanaina) word meaning "river of plenty". On these waterways, serene beauty and abundant wildlife abound.

5. Glaciers

Glaciers cover one million acres, or one-sixth of Denali National Park. The most massive glaciers in the park drain snow and ice from the flanks of Mt. McKinley.

6. Sled Dog Experience

Experience provides an in-depth look at the world of dog mushing and the Iditarod, Alaska's great sled dog race, including the training, racing and breeding of these champion sled dogs.

7. Alaska Homesteading

After the U.S. purchased Alaska, farmers, miners and wilderness pioneers began claiming land. Until 1986, homesteading remained a viable method of settling Alaska.

8. Gold Panning

Just as the lure of gold brought the miners to Alaska over 100 years ago, it still does today. Trapper Creek Museum unveils how to pan for gold and how gold mining has progressed through the years.

Points of Interest: Fairbanks

1. Arctic Circle

The Arctic Circle, the region around the North Pole, includes the northern parts of Europe, Asia, and North America, and the Arctic and Subarctic regions of Alaska, Canada, Greenland and Iceland.

2. Riverboat Discovery

A cruise aboard an authentic sternwheeler riverboat along the Chena and Tanana Rivers offers a demonstration of a fish wheel, as well as insight into Athabascan Indian culture and the Iditarod.

3. Trans-Alaska Pipeline

The 800-mile-long Trans Alaska Pipeline System (TAPS) is one of the largest pipeline systems in the world, stretching from Prudhoe Bay to Valdez, the northernmost ice-free port in North America.

4. Gold Dredge # 8

From a ride on the Tanana Valley Railroad into the gold fields of the Interior to a tour of the mining camp and gold panning, Alaska's mining history comes alive at the Gold Dredge #8.

5. Fountainhead Antique Auto Museum

The Fountainhead Antique Auto Museum features over 70 historically significant American automobiles and showcases the interesting heritage of the automobile during Alaska's post-Gold Rush era.

6. Chena Hot Springs & Ice Museum

Chena Hot Springs is a hot spring and year-round resort. On site is the Aurora Ice Museum considered the most artistic ice hotel in the world with an ice chandelier mimicking the northern lights.

7. Pioneer Park

This 44-acre theme park commemorates Alaska's pioneering history, and features several Alaska museums and historical displays, including an old Alaska riverboat and narrow gauge railroad.

8. Native Cultures

The native cultures of Alaska have had a significant impact on the state. Come learn about their rich history and take a closer look at their unique and extraordinary ways of life.